

Drum



PRISMATIQUE





Cover

SIZE: 120" x 48/35" x 29"H (2-section) True Boat
TOP: Carrara Marble
EDGE: 1-1/2" Square
BASE: Polished chrome

This page

SIZE: 168" x 60" x 29"H (2-section) True Rectangle
TOP: Painted back glass, o23 salt
EDGE: 1-1/4" RB with polished stainless steel scissor
BASE: Brushed chrome
POWER: Cove/D-22 undertop apron, o23 Salt

Credenza 5-door

SIZE: 95" x 24" x 34"H
TOP: Painted back glass, o23 Salt
EDGE: 1-1/4" RB with polished stainless steel scissor
CASE/DOORS: o23 Salt Colora
BASE: 1" x 1" Parsons, brushed stainless steel

Timeless and adaptable, Drum bases are a long-standing staple of the office environment. They offer maximum accommodation for AV/IT and power interface. Available in brushed or polished chrome, wood veneer or Colora colors, this workhorse base is a classic option for high demand rooms. Drum just gets the job done.



Top

SIZE: 96" D x 29"H (2-section) Round
 TOP: 621 Natural Flatcut Oak
 EDGE: Square Wood
 BASE: 022 Black Colora
 POWER: Cove/Box2 with Natural Flatcut Oak lid

Credenza, 8-door

SIZE: 152" x 24" x 34" H
 TOP: 621 Natural Flatcut Oak
 EDGE: RB Wood
 CASE/DOORS: 621 Natural Flatcut Oak
 RAISED BASE: 1" x 1" Parsons, 022 Black Colora



Right

SIZE: 240" x 60" x 29" (3-section) True Boat
 TOP: Carrara Marble
 EDGE: 1-1/2" Square
 BASE: Polished chrome
 POWER: Cove/Box4 with Carrara Marble lid

Credenza, 8-door

SIZE: 152" x 24" x 34" H
 TOP: 735 Ebony Flatcut Ash
 EDGE: Square Wood
 CASE/DOORS: 735 Ebony Flatcut Ash
 RAISED BASE: 1" x 1" Parsons,
 019 Silver Metallic Colora





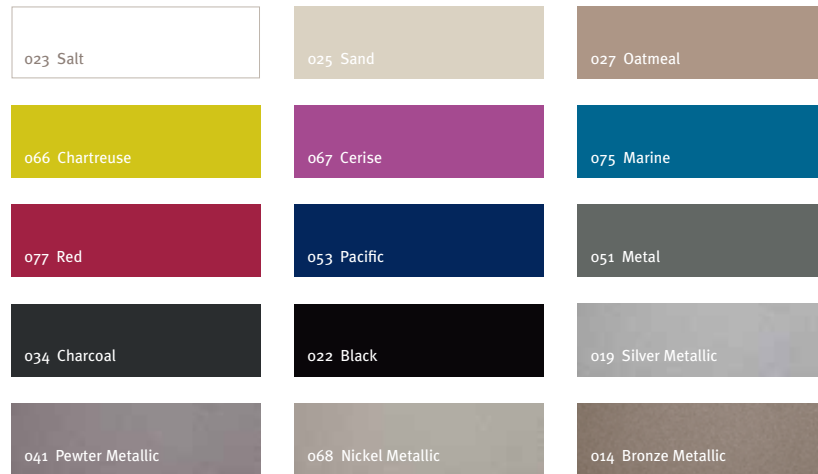
SIZE: 72" D x 29"H (2-section) Round
TOP: Grey Stone Marble
EDGE: 3/4" RB
BASE: Brushed chrome
POWER: Cove/D-22 undertop apron, custom color



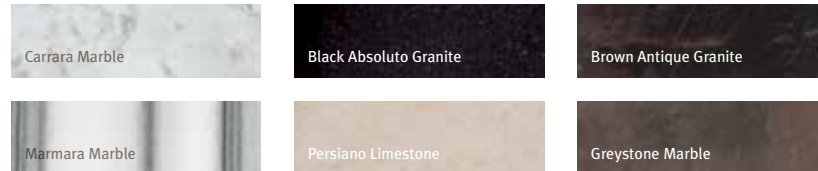
SIZE: 108" x 60" x 29" H (1-piece) True Rectangle
TOP: Riftcut Oak, stain to match
EDGE: Razor Wood
BASE: Riftcut Oak, stain to match
POWER: Cove/Box4 with Riftcut Oak lid

Table Top Finishes

PAINTED BACK GLASS

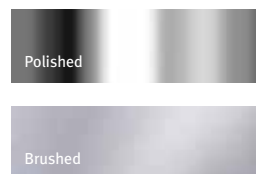


STONE *View more options at www.prismatique.com*



Base Finishes

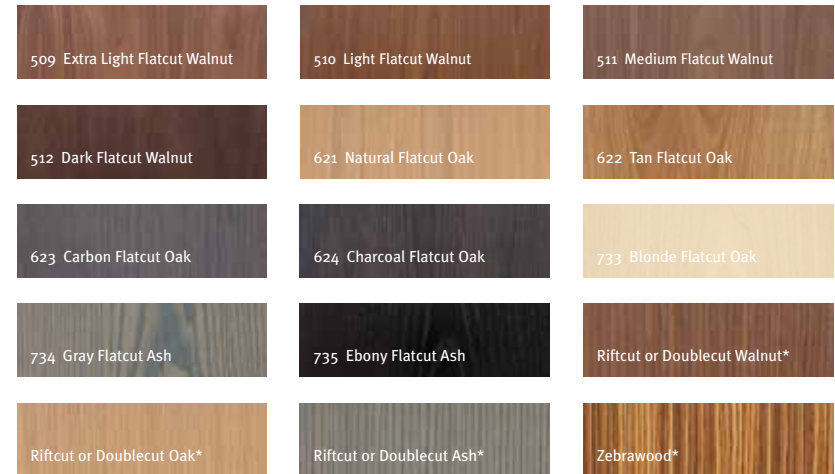
STAINLESS STEEL



COLORA *Textured polyurethane coating*



VENEER

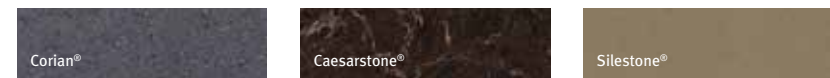


**Premium veneer*

LAMINATE *View more options at www.prismatique.com*



SOLID SURFACE *View more options at www.prismatique.com*



Edge Details

PAINTED BACK GLASS



VENEER



STONE



LAMINATE



Electrical/Communications Details

Cove/2-2



Cove/Undertop Apron



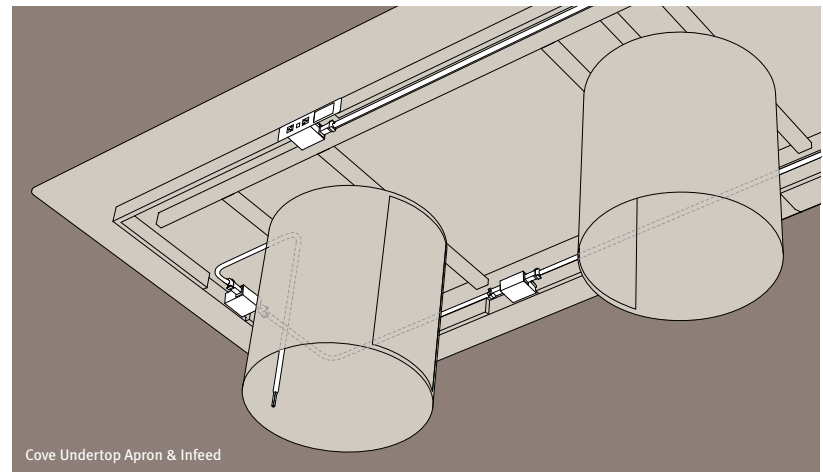
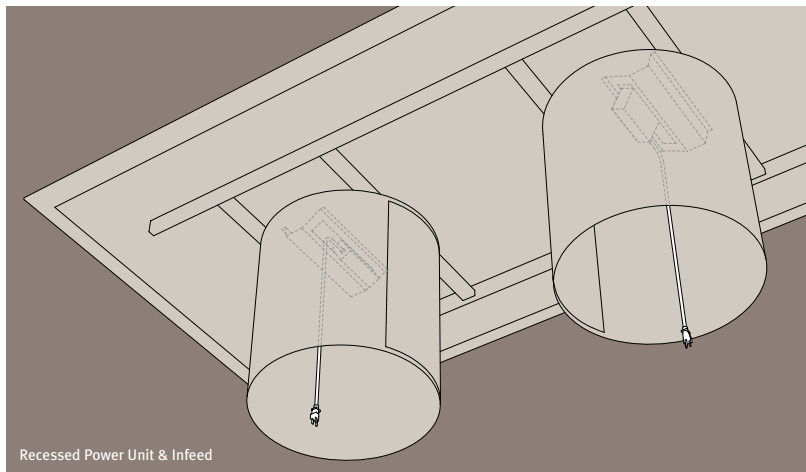
Cove/Box2



Cove/Box4



INTERFACE CONNECTION



PRISMATIQUE

95 Wingold Avenue
Toronto, Ontario, Canada
M6B-1P8

prismatique.com | 888 414 7333

Visit our showrooms in Chicago, New York and Toronto

Prismatique Designs Ltd., founded in 1979, is a privately owned Canadian contract furniture manufacturer with an international reputation for precise engineering and office table specialization.

Prismatique offers choices—not compromises. We offer extensive versatility in finish options, ranging from painted back glass to stone to veneer and laminate. This flexibility enables the designer to “Customize with Confidence” and partner with us to create unique table solutions at less than custom prices.

It's not just about what we do. It's about how we do it.